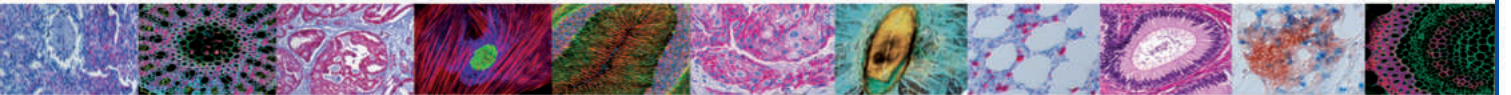


GIGATOME



MICRO-SAW



**The Saw-Microtome with Diamond Blade
for the ultra hard edge of sectioning**

MICRO-SAW



Tabletop Saw-Microtome

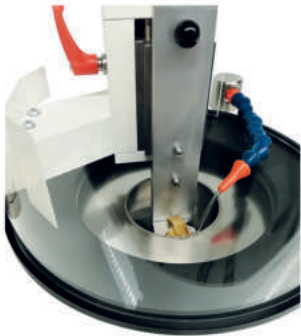
For ultra hard specimen like bones, teeth, implants, minerals or geological materials, ceramics, porcelain, glass fibres, cables, artificial biomaterial device, all MMA embeddings.

Section thickness of approximately 30 μm or more
For specimen with a diameter up to 40 mm

Microtome

Saw Speed: 600 rpm
Sectioning thickness, adjustable in 1 μm -steps
Control panel
Electronic movable arm speed with control function
Digital height adjustment
Adjustable sample fixation
Water connection for liquid cooling

Gripper system (optional)
Cooling tank with pump (optional)



Electrical connections

Nominal voltage: 110 - 240 V
Nominal frequency: 50 Hz - 60 Hz

Dimensions and weights

Microtome (H x W x L): 430 x 480 x 500 mm
Microtom: approx. 75 kg

Technical specifications subject to change.



Contact

Gigatome
Begonienweg 30
D - 89297 Roggenburg
Germany

Tel.: +49 (0) 7300 / 458 4035
Fax: +49 (0) 7300 / 458 4036
Email: info@gigatome.de
Web: www.gigatome.de



GIGATOME